

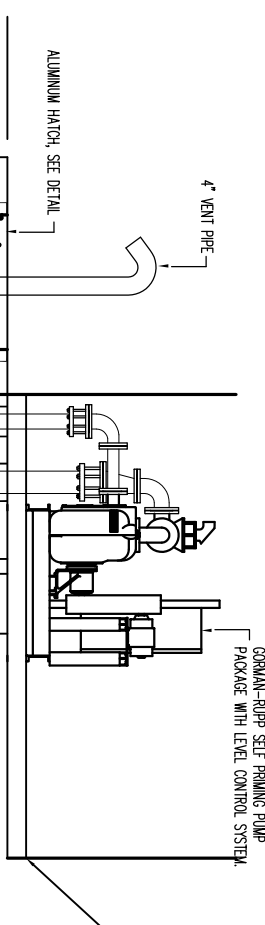
SLAB TOP PLAN VIEW

ACCESS OPENING SHALL BE FITTED WITH A PERMANENTLY INSTALLED, RAIL MOUNTED, RETRACTABLE FALL PREVENTION SYSTEM THAT FACILITATES ACCESS TO THE CONFINED SPACE. THIS SYSTEM SHALL BE A HATCH NET 121 AS MANUFACTURED BY SAFE APPROACH, INC., AUBURN, ME (300) 571-1157.

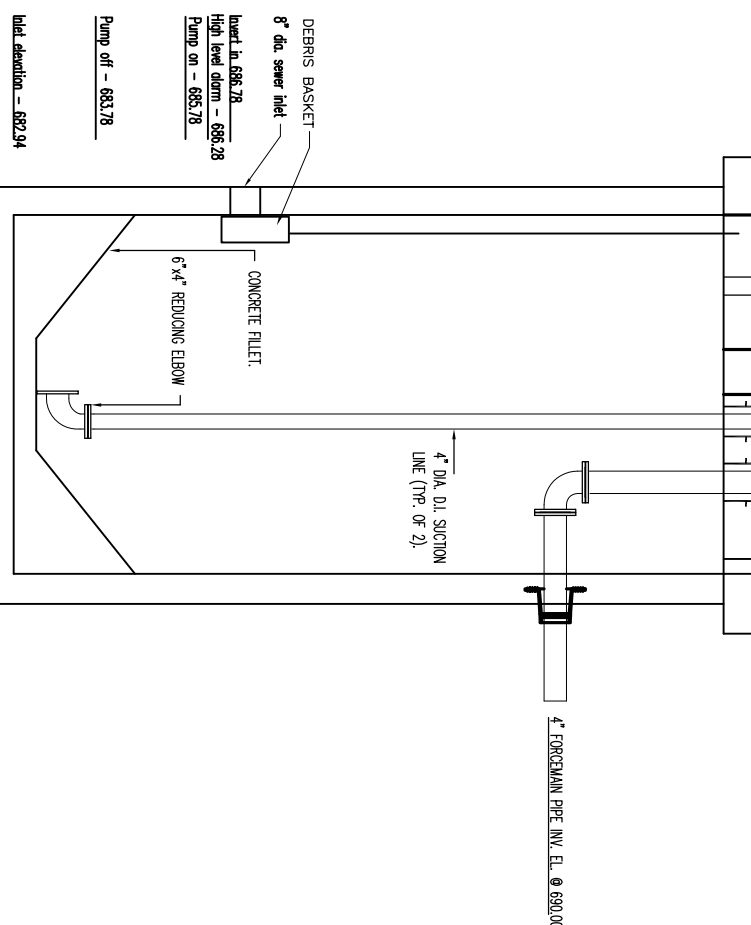
- DESIGN NOTES:**
- 1) CONCRETE MINIMUM DESIGN STRENGTH: 5000 PSI @ 28 DAYS
 - 2) STEEL REINFORCEMENT: ASTM A-615, GRADE 60 REBAR
 - 3) DESIGN LOADING: 1" MINIMUM COVER, ASHTO H20-44
 - 4) DESIGN SPECIFICATIONS: AC308-99, ASHTO LOAD FACTOR DESIGN METHOD.

- ASSUMPTIONS:**
- 1) GROUND WATER @ 3.5' BELOW GRADE (ELEVATION @ 44.50')
 - 2) EARTH COVER - 1'-0" MAX (TOP OF STRUCTURE ELEVATION @ 48.00')
 - 3) 2'-0" LIVE LOAD SURCHARGE APPLIED TO 8'-0" DEPTH.
 - 4) LIVE LOAD IMPACT 0'-1" COVER, I=30%
 - 5) COEFFICIENT OF ACTIVE EARTH PRESSURE, $K_a = 0.33$
 - 6) DRY EARTH DENSITY: 120 pcf
 - 7) SATURATED EARTH DENSITY: 120 pcf
- SATURATED EARTH LATERAL PRESSURE = 190 pcf + 62.4 pcf = 81.4 pcf

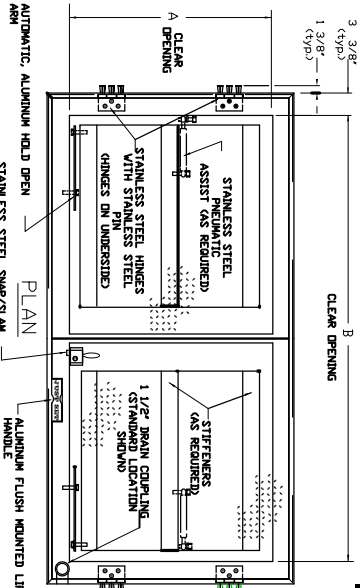
- GENERAL NOTES:**
- 1) JOINTS TO BE SEALED WITH CONSOL CS102 JOINT SEALANT.
 - 2) STRUCTURES ARE TO BE EXTERIOR ASPHALT COATED EXCEPT SLAB TOP.
 - 3) DISCHARGE PIPING TO BE 4" DUCTILE IRON.
 - 4) PUMPS: GORMAN RIPP SELF PRIMING PUMP PACKAGE WITH LEVEL CONTROL SYSTEM.
 - 6) CONTRACTOR TO VERIFY ALL ELEVATIONS & PIPE PENETRATIONS.



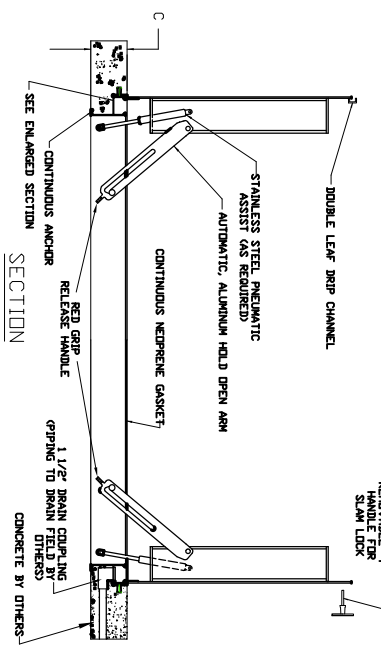
SECTION VIEW



SECTION VIEW



PLAN

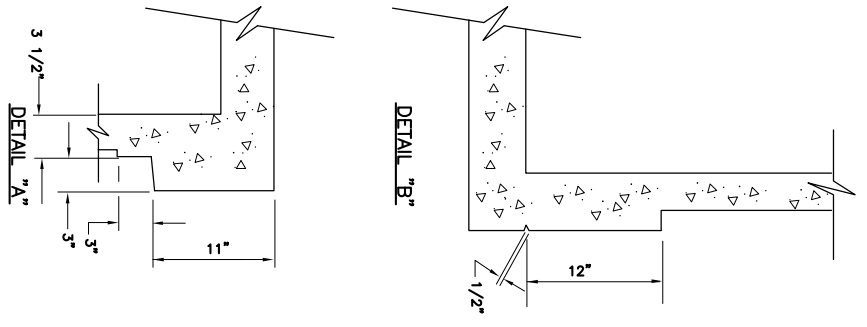


SECTION

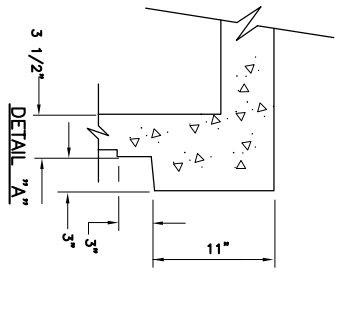
- JUST SET ALUMINUM DOOR, STANDARD DUTY, DOUBLE LEAF**
- 1/4" Diamond Plate Lid Reinforced for 300 lb/ft live load
 - Drain Trough Frame with Gasket for Water Resistance
 - Protective Barrier where Concrete meets Aluminum
 - Continuous Anchor to Lock Frame into Concrete
 - Type 316 Stainless Steel Pneumatic Assist (Kas req'd)
 - Stainless Steel, Butt Style, Hinges & Hinge Pin
 - Anchored In Concrete With Metal Inserts.
 - All Type 304 Stainless Steel Hardware
 - Type 316 Stainless Steel Snap Lock
 - 1-1/2" ϕ Drain Coupling
 - Automatic Hold Open Arm, With Red Release Handle
 - Flush Mounted Lift Handle

QTY	STANDARD DIMENSIONS			STOCK #	OFFICE USE
	A	B	C		
1	30"	48"	6.00"	ATS3048D	

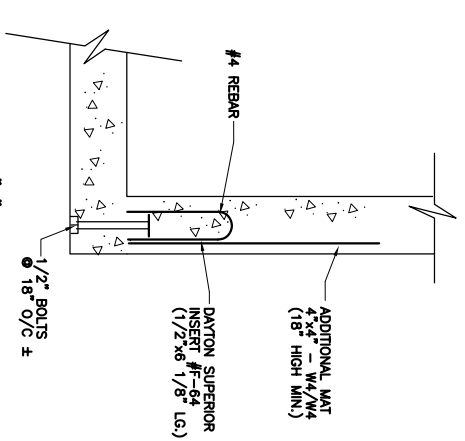
An asterisk (*) next to stock number = stainless steel
pneumatic assist as standard



DETAIL "B"

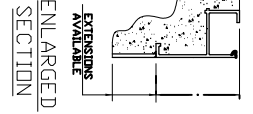


DETAIL "A"



DETAIL "B"

(SHOWING BOLTS & ADD'L. REINFORCING)
SCALE: 1-1/2" = 1'-0"



ENLARGED SECTION

'RECORD DRAWING'

I HEREBY CERTIFY THAT TO THE BEST OF MY KNOWLEDGE, BASED UPON CONSTRUCTION RECORDS PROVIDED BY THE RESIDENT, ENGINEER AND THE CONTRACTOR, ALL WORK SHOWN ON THIS DRAWING HAS BEEN COMPLETED AS SHOWN.

HOYLE, TANNER & ASSOCIATES, INC.

NOTE:

ALL PROJECT REQUIREMENTS AS SET FORTH ON THIS DRAWING HAVE BEEN COMPLIED WITH DURING THE COURSE OF CONSTRUCTION. ALL NOTE WORDING CONTAINED HEREON IS UNDERSTOOD TO BE PAST TENSE.

PROJECT NO.	105710	FILE NAME	MHDET-TOW
SCALE: 1/2"=1'-0"	DATE: FEB. 2002	DES. BY	JAH
		DR. BY	CAB
		CHKD. BY	NLT
DO NOT SCALE DRAWING			

HTA Hoyle, Tanner & Associates, Inc.
150 Dow Street • Manchester • New Hampshire 03101
Consulting Engineers

CHERRY VALLEY SEWER DISTRICT
LEICESTER, MASSACHUSETTS
PLAN AND PROFILE

WETWELL & BUILDING DETAILS
TOWTAID PARK