

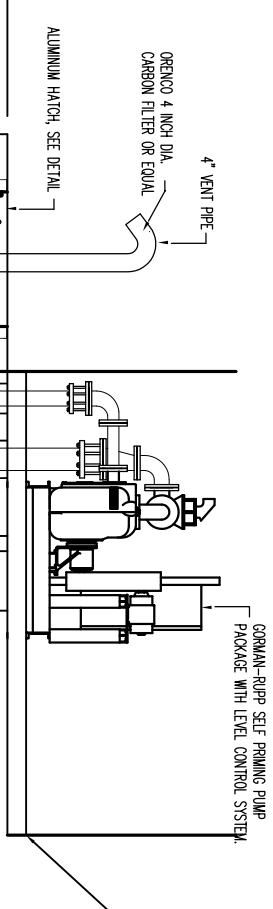
SLAB TOP PLAN VIEW

ACCESS OPENING SHALL BE FITTED WITH A PERMANENTLY INSTALLED, RAIL MOUNTED, RETRACTABLE FALL PREVENTION SYSTEM THAT FACILITATES ACCESS TO THE CONFINED SPACE. THIS SYSTEM SHALL BE A HATCH NET 121 AS MANUFACTURED BY SAFE APPROACH INC., AUBURN, ME (300)471-1157.

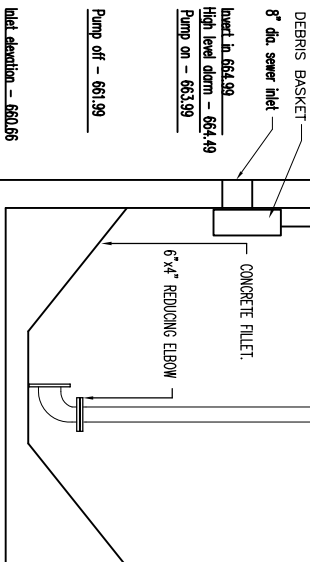
- DESIGN NOTES:
- 1) CONCRETE MINIMUM DESIGN STRENGTH: 5000 PSI @ 28 DAYS
  - 2) STEEL REINFORCEMENT: ASTM A-615, GRADE 60 REBAR
  - 3) DESIGN LOADS:
    - 1) MINIMUM COVER: 1\"/>
  - 4) DESIGN SPECIFICATIONS:
    - ASTM A-99
    - ASHTO H20-44
    - ASHTO LOAD FACTOR DESIGN METHOD.

- ASSUMPTIONS:
- 1) GROUND WATER @ 3.5' BELOW GRADE (ELEVATION @ 44.50')
  - 2) EARTH COVER - 1'-0" MAX (TOP OF STRUCTURE ELEVATION @ 48.00').
  - 3) 2'-0" LIVE LOAD SURCHARGE APPLIED TO 8'-0" DEPTH.
  - 4) LIVE LOAD IMPACT 0'-1" COVER, I=30%
  - 5) COEFFICIENT OF ACTIVE EARTH PRESSURE,  $K_a = 0.33$
  - 6) DRY EARTH DENSITY: 120 pcf
  - 7) SATURATED EARTH DENSITY: 120 pcf
- 120 pcf - 64.2 pcf = 57.6 pcf  
 57.6 pcf(0.33) = 19.0 pcf  
 SATURATED EARTH LATERAL PRESSURE = 19.0 pcf + 62.4 pcf = 81.4 pcf

- GENERAL NOTES:
- 1) JOINTS TO BE SEALED WITH CONSOL CS102 JOINT SEALANT.
  - 2) STRUCTURES ARE TO BE EXTERIOR ASPHALT COATED EXCEPT SLAB TOP.
  - 3) DISCHARGE PIPING TO BE 4" DUCTILE IRON.
  - 4) PUMPS: GORMAN RIPP SELF PRIMING PUMP PACKAGE WITH LEVEL CONTROL SYSTEM.
  - 6) CONTRACTOR TO VERIFY ALL ELEVATIONS & PIPE PENETRATIONS.



SECTION VIEW



Label elevation = 66.026

Pump off - 66.199

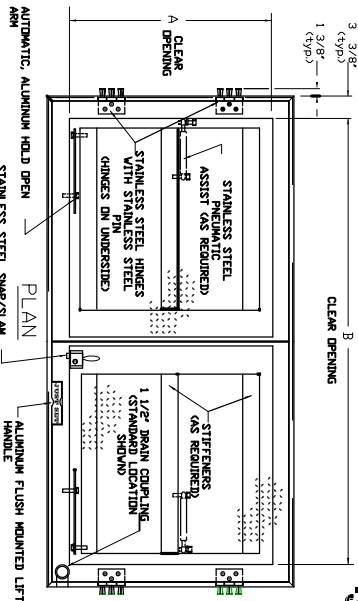
High level diam - 66.449

Pump on - 66.339

4" DIA. O.I. SUCTION LINE (TYP. OF 2)

4" GORMAN PIPE INV. EL. @ 67.350'

Pump Station floor elev. 67.842

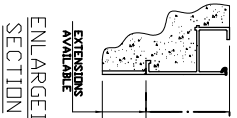


JUST SET™ ALUMINUM DOOR/STANDARD DUTY DOUBLE LEAF

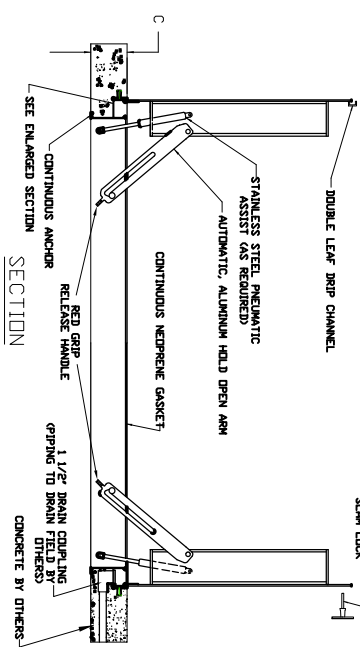
- 1/4" Diamond Plate Lid Reinforced for 300 lb/ft live load
- Drain Trough Frame with Gasket for Water Resistance
- Protective Barrier where Concrete meets Aluminum
- Continuous Anchor to Lock Frame into Concrete
- Type 316 Stainless Steel Pneumatic Assist (Kas req'd)
- Stainless Steel, Butt Style, Hinges & Hinge Pin
- Anchored in Concrete with Metal Inserts.
- All Type 304 Stainless Steel Hardware
- Type 316 Stainless Steel Snap Lock
- 1-1/2"  $\phi$  Drain Coupling
- Automatic Hold Open Arm, With Red Release Handle
- Flush Mounted Lift Handle

An asterisk (\*) next to stock number = stainless steel  
 pneumatic assist as standard

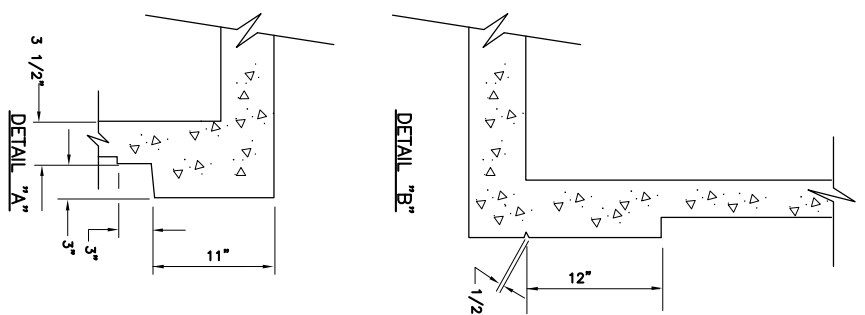
QTY	STANDARD DIMENSIONS			STOCK #	OFFICE USE
	A	B	C		
1	30"	48"	6.00"	ATS3048D	



ENLARGED SECTION

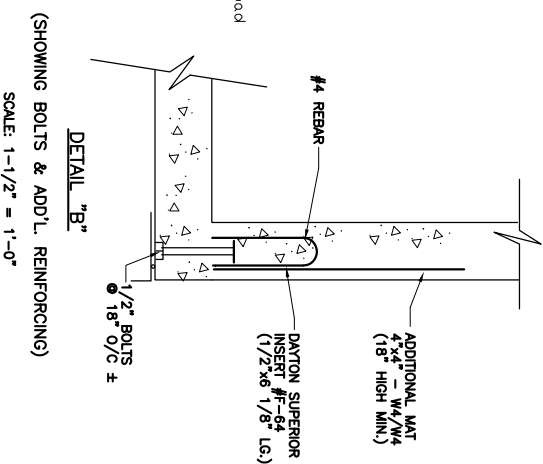


SECTION



DETAIL "A"

DETAIL "B"



DETAIL "B" (SHOWING BOLTS & ADD'L. REINFORCING)

SCALE: 1-1/2" = 1'-0"

**'RECORD DRAWING'**

I HEREBY CERTIFY THAT TO THE BEST OF MY KNOWLEDGE, BASED UPON CONSTRUCTION RECORDS PROVIDED BY THE RESIDENT, ENGINEER AND THE CONTRACTOR, ALL WORK SHOWN ON THIS DRAWING HAS BEEN COMPLETED AS SHOWN.

HOYLE, TANNER & ASSOCIATES, INC.

NOTE:

ALL PROJECT REQUIREMENTS AS SET FORTH ON THIS SHEET HAVE BEEN COMPLETED DURING THE COURSE OF CONSTRUCTION. ALL NOTE WORDING CONTAINED HEREON IS UNDERSTOOD TO BE PAST TENSE.

CHERRY VALLEY SEWER DISTRICT  
 LEICESTER, MASSACHUSETTS  
 PLAN AND PROFILE  
**WETWELL & BUILDING DETAILS**  
 MCCARTHY AVE.

**HTA** Hoyle, Tanner & Associates, Inc.  
 150 Dow Street • Manchester • New Hampshire 03101  
 Consulting Engineers

SCALE: 1/2"=1'-0" DATE: FEB. 2002 DES. BY JAH DR. BY CAB CHKD. BY NLT

PROJECT NO.  
 105710

FILE NAME  
 MHDET-McCAR

REV.	DESCRIPTION	S.R.	W.C.	W.C.	3/03
DR. BY	CHKD. BY	APPD. BY	DATE		
1.	RECORD DRAWING				

DRAWING NO.

4