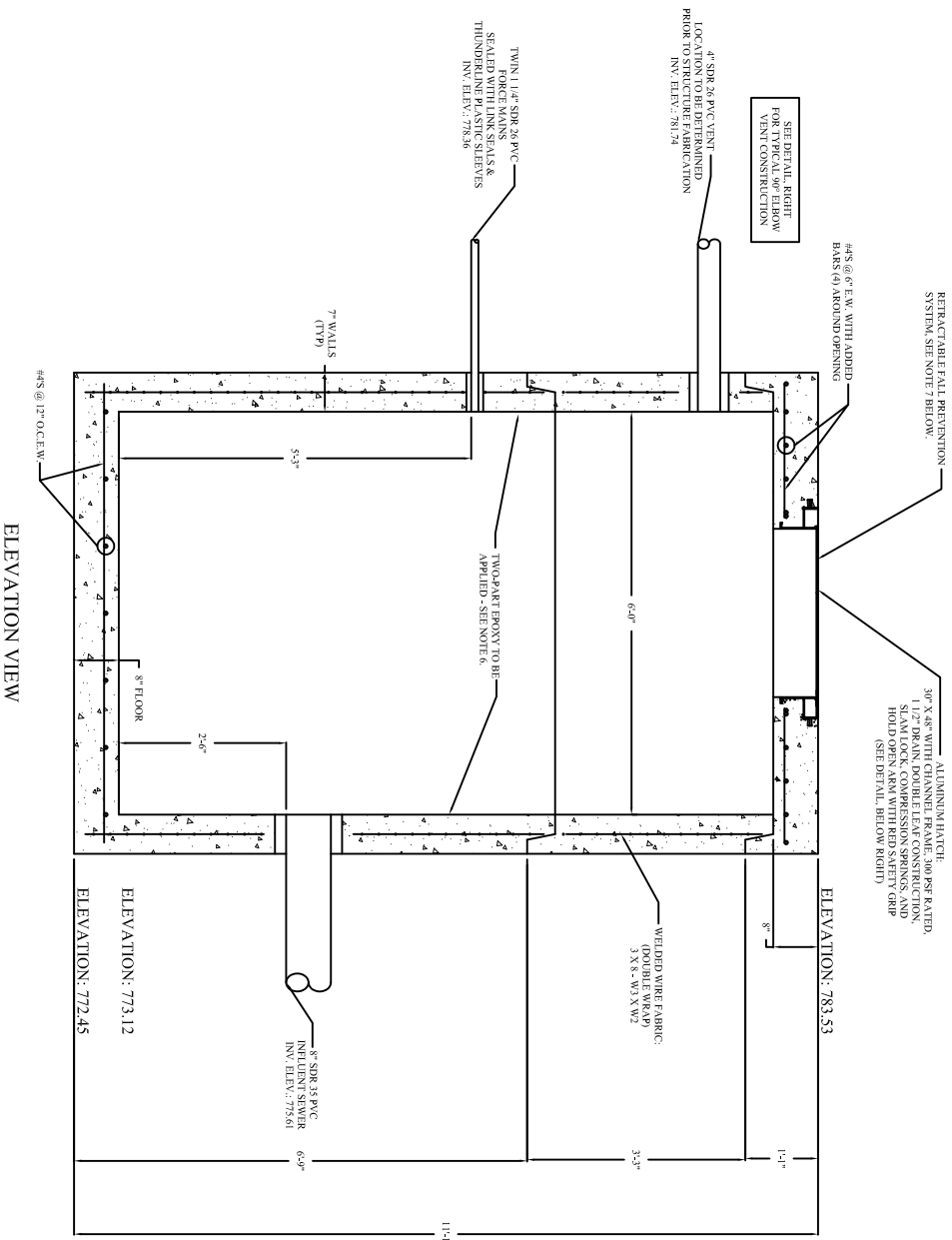
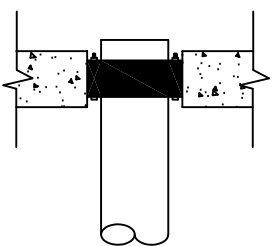


PLAN VIEW

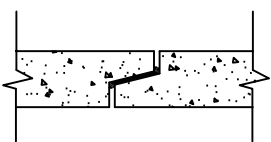


ELEVATION VIEW



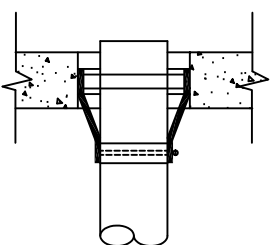
LINK SEAL PIPE CONNECTIONS

LINK SEALS SHALL BE MODULAR MECHANICAL. THE RUBBER LINES SHOWN TO CONTINUOUSLY FILL THE ANNULAR SPACE BETWEEN THE PIPE AND THE WALL OPENING. MATERIAL PROPERTIES OF LINK SEAL ELASTOMERS MEET OR EXCEED THE APPLICABLE REQUIREMENTS OF THE FOLLOWING ASTM SPECIFICATIONS: D-240, D-412, S-99 AND D-597. BOLT AND WATING NUTS HAVE A TENSILE STRENGTH OF 74,000 PSI.



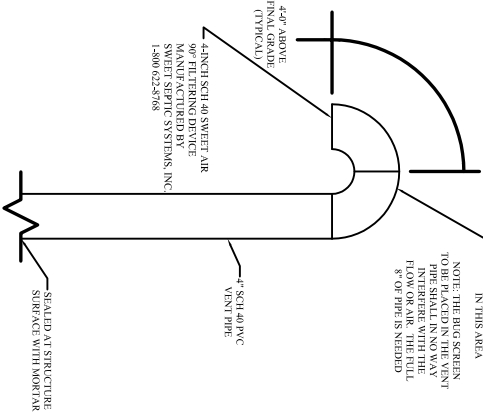
BUTYL RUBBER JOINT SEALANT

BUTYL RUBBER JOINT SEALANT SHALL MEET OR EXCEED THE REQUIREMENTS OF FEDERAL SPECIFICATION SS-5210, ASTM C-990 AND AASHTO M-1988.



FLEXIBLE SLEEVE PIPE CONNECTIONS

FLEXIBLE SLEEVE PIPE CONNECTIONS SHALL MEET OR EXCEED ALL REQUIREMENTS OF ASTM C-923 FOR RIBBON, MANHOLE STRUCTURES & PRESS.



VENT PIPE DETAIL

NOTE: THE BIG SCREEN TYPE PIPE SHALL IN NO WAY INTERFERE WITH THE LIFT OF PILES BEING

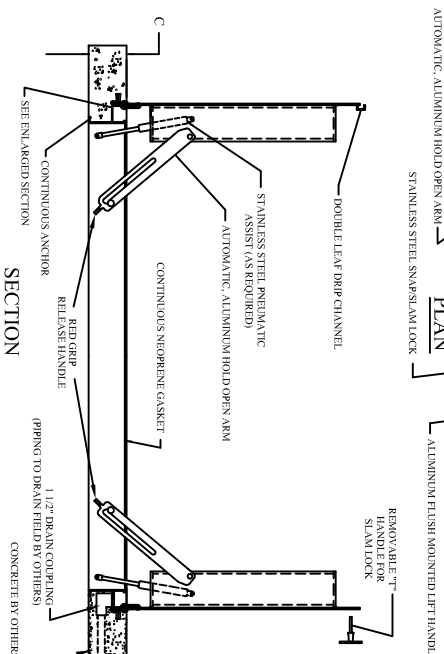
JUST SET™ ALUMINUM DOOR STANDARD DUTY DOUBLE LEAF

- 1/4" Diamond Plate Lid Reinforced for 300 lb/ft live load
- Drain Trough Frame with Gasket for Water Resistance
- Protective Barrier where Concrete meets Aluminum
- Continuous Anchor to Lock Frame into Concrete
- Type 316 Stainless Steel Pneumatic Assist (*as req'd)
- Stainless Steel Butt Style Hinges & Hinge Pin
- Anchored in Concrete with Metal Inserts
- All Type 304 Stainless Steel Hardware
- Type 316 Stainless Steel Sump Lock
- 1-1/2" Ø Drain Coupling
- Automatic Hold Open Arm, With Red Release Handle
- Flush Mounted Lift Handle

An asterisk (*) next to stock number = stainless steel pneumatic assist as standard

STANDARD DIMENSIONS			OFFICE USE	
QTY	A	B C	STOCK #	
1	30"	48"	6.00"	ATSS048D

ENLARGED SECTION



SECTION

RECORD DRAWING

I HEREBY CERTIFY THAT TO THE BEST OF MY KNOWLEDGE BASED UPON CONSTRUCTION RECORDS PROVIDED BY THE RESIDENT ENGINEER AND THE CONTRACTOR, THIS DRAWING HAS BEEN COMPLETED AS SHOWN.

HOYLE TANNER & ASSOCIATES, INC.

NOTE:

ALL PROJECT REQUIREMENTS AS SET FORTH ON THIS SHEET HAVE BEEN COMPLIED WITH DURING THE COURSE OF CONSTRUCTION. ALL NOTE WORDING CONTAINED HEREON IS UNDERSTOOD TO BE PAST TENSE.



MICHIE CORPORATION, INC.
 (CAPITAL CONCRETE PRODUCTS DIV.)
 P.O. BOX 870 - OLD CONCORD ROAD
 HENNIKER, NH 03242
 TEL 603-428-3218
 FAX 603-428-7547

DATE	REVISION	BY:

6' SANITARY PUMP CHAMBER
 PLANS, DETAILS & NOTES

REDFIELD ROAD
 PUMP CHAMBER
 CHERRY VALLEY PROJECT
 LEICESTER, MA

F. R. MAHONY & ASSOC'S., INC.
 273 WEYMOUTH STREET
 ROCKLAND, MA 02370

DATE:	2/21/01
SCALE:	N/S
DESIGN BY:	MS
DRAWN BY:	MS
CHECKED BY:	
PROJECT NO.:	2891
DRAWING FILE:	2891-PC1