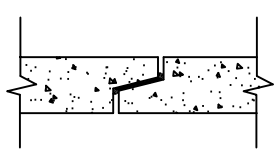
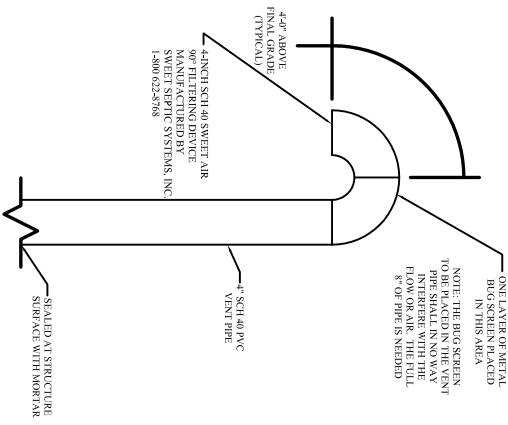


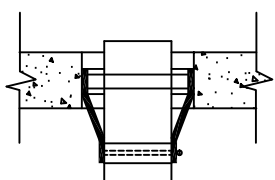
LINK SEAL PIPE CONNECTIONS



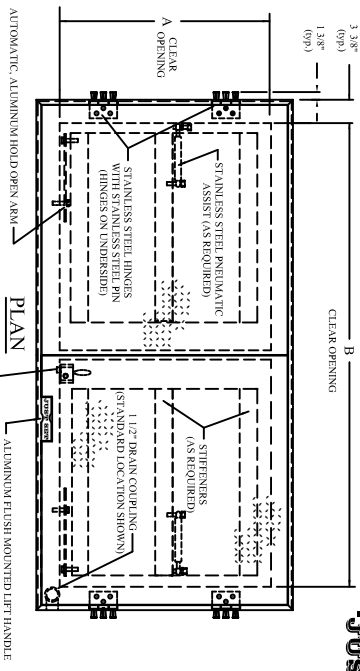
BUTYL RUBBER JOINT SEALANT



VENT PIPE DETAIL



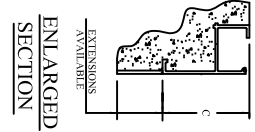
FLEXIBLE SLEEVE PIPE CONNECTIONS



JUST SET™ ALUMINUM DOOR STANDARD DUTY DOUBLE LEAF

- 1/4" Diamond Plate Lid Reinforced for 300 lb/ft² live load
- Drain Trough Frame with Gasket for Water Resistance
- Protective Barrier where Concrete meets Aluminum
- Continuous Anchor to Lock Frame into Concrete
- Type 316 Stainless Steel Pneumatic Assist (*as req'd)
- Stainless Steel Butt Style Hinges & Hinge Pin
- Anchored in Concrete with Metal Inserts
- All Type 304 Stainless Steel Hardware
- Type 316 Stainless Steel Snap Lock
- 1-1/2" Ø Drain Coupling
- Automatic Hold Open Arm, With Red Release Handle
- Flush Mounted Lift Handle

| STANDARD DIMENSIONS | | | OFFICE USE | |
|---------------------|-----|-----|------------|----------|
| QTY | A | B | C | STOCK # |
| 1 | 30" | 48" | 6.00" | AT53048D |



ENLARGED SECTION

RECORD DRAWING

I HEREBY CERTIFY THAT TO THE BEST OF MY KNOWLEDGE, BASED UPON CONSTRUCTION RECORDS PROVIDED BY THE RESIDENT ENGINEER AND THE CONTRACTOR, ALL WORK SHOWN ON THIS DRAWING HAS BEEN COMPLETED AS SHOWN.

HOYLE, TANNER & ASSOCIATES, INC.

NOTE: ALL PROJECT REQUIREMENTS AS SHOWN ON THIS DRAWING HAVE BEEN COMPLETED WITHIN THE COURSE OF CONSTRUCTION. ALL NOTE WORDING CONTAINED HEREON IS UNDERSTOOD TO BE PAST TENSE.

- NOTES:
1. CONCRETE TO BE 4000 PSI @ 28 DAYS. CEMENT TO BE TYPE III PER ASTM C-150.
 2. CURCURENTIAL REINFORCING SHALL CONFORM TO ASTM A-618. TOP BOTTOM SLAB REINFORCING SHALL CONFORM TO ASTM A-615 GRADE 60 DEFORMED BLACK BARS. BOTH TO BE PLACED PER ASTM C-478 (L.S. & S.4).
 3. ALL REINFORCING SHALL BE PLACED WITH 1" CLEARANCE FROM ALL SURFACES.
 4. HORIZONTAL MANHOLE SECTION JOINTS TO BE SEALED WITH BUTYL RUBBER JOINT SEALANT PER ASTM C-990 & ASHTO M-198.
 5. PIPE PENETRATIONS SHALL BE SEALED WITH FLEXIBLE SLEEVE PIPE PENETRATIONS AND LINK SEAL CONNECTIONS PER DETAILS ABOVE.
 6. SHALL BE COATED WITH A TWO PART EPOXY SYSTEM. CONTACT DAN WARREN OF WARREN ENVIRONMENTAL.
 7. ALL PARTS OF THE PROVIDED FALL PREVENTION SYSTEM MUST CONFORM TO THE FOLLOWING:
 - OSHA 1910.145
 - OSHA 1926.105
 - ASTM B 117
 - ASTM D 714
 - ASTM D 294
 - ASTM D 851
 - ASTM E 298
 8. CONTRACTOR TO VERIFY AND SIGN ALL PARTS OF THE PROVIDED FALL PREVENTION SYSTEM EXCLUSIVE OF THE NET MUST BE STAINLESS STEEL AND/OR ALUMINUM.
 9. CONTRACTOR SHALL VERIFY ALL LOCATIONS AND ELEVATION PRIOR TO ORDERING MATERIAL.

MICHIE CORPORATION, INC.
 (CAPITAL CONCRETE PRODUCTS DIV.)
 P.O. BOX 870 - OLD CONCORD ROAD
 HENNIKER, NH 03242
 TEL 603-428-3218
 FAX 603-428-7647

| DATE | REVISION | BY: |
|------|----------|-----|
| | | |
| | | |
| | | |

6' SANITARY PUMP CHAMBER
 PLANS, DETAILS & NOTES

WILLOW HILL
 PUMP CHAMBER
 CHERRY VALLEY PROJECT
 LEICESTER, MA

F. R. MAHONY & ASSOC'S., INC.
 273 WEYMOUTH STREET
 ROCKLAND, MA 02370

| | |
|--------------|--------------|
| DATE: | 2/21/01 |
| SCALE: | N/S |
| DESIGN BY: | MS |
| DRAWN BY: | MS |
| CHECKED BY: | |
| PROJECT NO.: | 2981 |
| DWG. FILE: | WLL-PUMPCHAM |